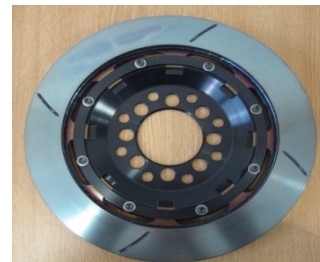
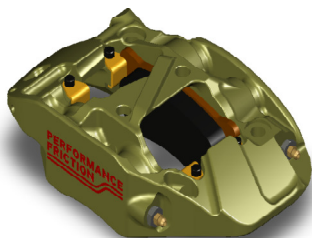


	Description	Side	Part Number	Quantity Per Car	
ZR43 Caliper	Front Caliper	Left	43.284.255.290.11	1	
		Right	43.284.255.290.12	1	
	Rear Caliper	Left	43.284.255.290.03	1	
		Right	43.284.255.290.04	1	
	Brake Pads (For retraction system)			7943.01.18.44	Axle Set
				7943.07.18.44	Axle Set
Brake Pads (Non Retraction)			7835.11.18.44	Axle Set	
			7835.13.18.44	Axle Set	

Discs & Bells	Front V2 Disc	Left	274.19.0033.45	1	
		Right	274.19.0033.46	1	
	Front V2 Bell & Hardware			172.641.073.13	2
	Rear V2 Disc	Left	262.18.0033.45	1	
		Right	262.18.0033.46	1	
	Rear V2 Bell & Hardware			161.641.070.13	2

Parts & Brake Fluid	Piston Kit		900.900.103.24	4
	Seal Kit		900.900.100.02	2
	Insulator Kit		900.900.101.02	2
	Piston Cap Kit		900.900.102.13	4
	Piston cap retainer springs 25mm		900.900.107.04	1
	Piston cap retainer springs 29mm		900.900.107.05	1
	Bleed Nipples		900.900.104.01	4
	Bleed Nipple Insert		900.900.104.02	2
	Abutment Kit		900.900.105.04	4
	Mounting Hat Hardware		TBA	4
	Inlet Adapter		900.900.104.07	4
	Brake Fluid (1x 0.5L)		025.0037	-
	Brake Fluid (12x 0.5L)		025.0038	-

Torque Specifications	
Bleed Nipples	6Nm
Bleed Nipple Inserts	20Nm
Inlet Adapter	20Nm
Bell to Disc Bolts	5Nm



Performance Friction Corporation

Carbon Metallic House, Wildmere Road, Banbury, Oxfordshire, OX16 3LU

Tel: +44 (0) 1295 221 020

Fax: +44 (0) 1295 279711

www.performancefriction.com

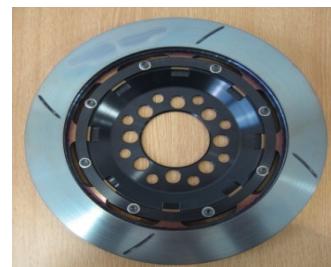
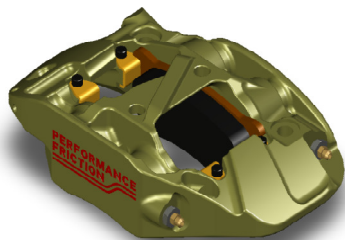
uksales@performancefriction.com

	Description	Side	Part Number	Quantity Per Car	
ZR43 Caliper	Front Caliper	Left	43.284.255.290.11	1	
		Right	43.284.255.290.12	1	
	Rear Caliper	Left	43.284.255.290.03	1	
		Right	43.284.255.290.04	1	
	Brake Pads (For retraction system)			7943.01.18.44	Axle Set
				7943.07.18.44	Axle Set
Brake Pads (Non Retraction)			7835.11.18.44	Axle Set	
			7835.13.18.44	Axle Set	

Discs & Bells	Front V2 Disc	Left	271.18.0033.45	1	
		Right	271.18.0033.46	1	
	Front V2 Bell & Hardware			172.641.070.13	2
	Rear V2 Disc	Left	262.18.0033.45	1	
		Right	262.18.0033.46	1	
	Rear V2 Bell & Hardware			161.641.070.13	2

Parts & Brake Fluid	Piston Kit		900.900.103.24	4
	Seal Kit		900.900.100.02	2
	Insulator Kit		900.900.101.02	2
	Piston Cap Kit		900.900.102.13	4
	Piston cap retainer springs 25mm		900.900.107.04	1
	Piston cap retainer springs 29mm		900.900.107.05	1
	Bleed Nipples		900.900.104.01	4
	Bleed Nipple Insert		900.900.104.02	2
	Abutment Kit		900.900.105.04	4
	Mounting Hat Hardware		TBA	4
	Inlet Adapter		900.900.104.07	4
	Brake Fluid (1x 0.5L)		025.0037	-
	Brake Fluid (12x 0.5L)		025.0038	-

Torque Specifications	
Bleed Nipples	6Nm
Bleed Nipple Inserts	20Nm
Inlet Adapter	20Nm
Bell to Disc Bolts	5Nm



Performance Friction Corporation

Carbon Metallic House, Wildmere Road, Banbury, Oxfordshire, OX16 3LU

Tel: +44 (0) 1295 221 020

Fax: +44 (0) 1295 279711

www.performancefriction.com

uksales@performancefriction.com



Dallara F308 Specification Sheet

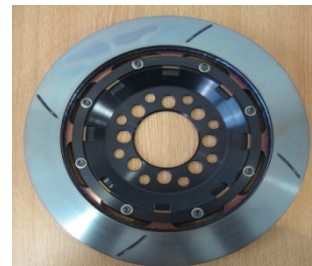
ZR24 Calipers - 274mm - V2

	Description	Side	Part Number	Quantity Per Car	
ZR43 Caliper	Front Caliper	Left	24.284.255.290.11	1	
		Right	24.284.255.290.12	1	
	Rear Caliper	Left	24.284.255.290.03	1	
		Right	24.284.255.290.04	1	
	Brake Pads (Non Retraction)			7835.11.18.44	Axle Set
				7835.13.18.44	Axle Set

Discs & Bells	Front V2 Disc	Left	274.19.0033.45	1
		Right	274.19.0033.46	1
	Front V2 Bell & Hardware		172.641.073.13	2
	Rear V2 Disc	Left	262.18.0033.45	1
		Right	262.18.0033.46	1
	Rear V2 Bell & Hardware		161.641.070.13	2

Parts & Brake Fluid	Piston Kit	900.900.103.24	4
	Seal Kit	900.900.100.02	2
	Insulator Kit	900.900.101.02	2
	Piston Cap Kit	900.900.102.13	4
	Piston cap retainer springs 25mm	900.900.107.04	1
	Piston cap retainer springs 29mm	900.900.107.05	1
	Bleed Nipples	900.900.104.01	4
	Bleed Nipple Insert	900.900.104.02	2
	Abutment Kit	900.900.105.04	4
	Mounting Hat Hardware	TBA	4
	Inlet Adapter	900.900.104.07	4
	Brake Fluid (1x 0.5L)	025.0037	-
	Brake Fluid (12x 0.5L)	025.0038	-

Torque Specifications	
Bleed Nipples	6Nm
Bleed Nipple Inserts	20Nm
Inlet Adapter	20Nm
Bell to Disc Bolts	5Nm



Performance Friction Corporation

Carbon Metallic House, Wildmere Road, Banbury, Oxfordshire, OX16 3LU

Tel: +44 (0) 1295 221 020

Fax: +44 (0) 1295 279711

www.performancefriction.com

uksales@performancefriction.com



Dallara F3 Specification Sheet

ZR24 - 271mm Fr & Rr Direct Drive

	Description	Side	Part Number	Quantity Per Car	
ZR43 Caliper	Front Caliper	Left	24.284.255.290.11	1	
		Right	24.284.255.290.12	1	
	Rear Caliper	Left	24.284.255.290.03	1	
		Right	24.284.255.290.04	1	
	Brake Pads (Non Retraction)			7835.11.18.44	Axle Set
				7835.13.18.44	Axle Set

Discs & Bells	Front Direct Drive Disc	Left	271.18.0033.07	1
		Right	271.18.0033.08	1
	Front DD Bell		179.641.070.12	2
	Direct Drive Bobbin Kit		912.100.475.03	2
	Rear Direct Drive Disc	Left	271.18.0033.07	1
		Right	271.18.0033.08	1
	Rear DD Bell		179.641.070.12	2
	Direct Drive Bobbin Kit		912.100.475.03	2

Parts & Brake Fluid	Piston Kit		900.900.103.24	4
	Seal Kit		900.900.100.02	2
	Insulator Kit		900.900.101.02	2
	Piston Cap Kit		900.900.102.13	4
	Piston cap retainer springs 25mm		900.900.107.04	1
	Piston cap retainer springs 29mm		900.900.107.05	1
	Bleed Nipples		900.900.104.01	4
	Bleed Nipple Insert		900.900.104.02	2
	Abutment Kit		900.900.105.04	4
	Mounting Hat Hardware		TBA	4
	Inlet Adapter		900.900.104.07	4
	Brake Fluid (1x 0.5L)		025.0037	-
	Brake Fluid (12x 0.5L)		025.0038	-

Torque Specifications	
Bleed Nipples	6Nm
Bleed Nipple Inserts	20Nm
Inlet Adapter	20Nm
Bell to Disc Bolts	5Nm

Performance Friction Corporation

Carbon Metallic House, Wildmere Road, Banbury, Oxfordshire, OX16 3LU

Tel: +44 (0) 1295 221 020

Fax: +44 (0) 1295 279711

www.performancefriction.com

uksales@performancefriction.com



Dallara F3 Specification Sheet

ZR24 - 271mm - Peg Drive

	Description	Side	Part Number	Quantity Per Car
ZR43 Caliper	Front Caliper	Left	24.284.255.290.11	1
		Right	24.284.255.290.12	1
	Rear Caliper	Left	24.284.255.290.03	1
		Right	24.284.255.290.04	1
	Brake Pads (Non Retraction)			7835.11.18.44
			7835.13.18.44	Axle Set

Discs & Bells	Front Direct Drive Disc	Left	271.18.0033.01	1
		Right	271.18.0033.02	1
	Front Peg Drive Bell		178.641.073.01	2
	Direct Drive Bobbin Kit		900.700.013.09	2
	Rear Direct Drive Disc	Left	271.18.0033.01	1
		Right	271.18.0033.02	1
	Rear Peg Drive Bell		178.641.073.01	2
	Direct Drive Bobbin Kit		900.700.013.09	2

Parts & Brake Fluid	Piston Kit		900.900.103.24	4
	Seal Kit		900.900.100.02	2
	Insulator Kit		900.900.101.02	2
	Piston Cap Kit		900.900.102.13	4
	Piston cap retainer springs 25mm		900.900.107.04	1
	Piston cap retainer springs 29mm		900.900.107.05	1
	Bleed Nipples		900.900.104.01	4
	Bleed Nipple Insert		900.900.104.02	2
	Abutment Kit		900.900.105.04	4
	Mounting Hat Hardware		TBA	4
	Inlet Adapter		900.900.104.07	4
	Brake Fluid (1x 0.5L)		025.0037	-
	Brake Fluid (12x 0.5L)		025.0038	-

Torque Specifications	
Bleed Nipples	6Nm
Bleed Nipple Inserts	20Nm
Inlet Adapter	20Nm
Bell to Disc Bolts	5Nm

Performance Friction Corporation

Carbon Metallic House, Wildmere Road, Banbury, Oxfordshire, OX16 3LU

Tel: +44 (0) 1295 221 020

Fax: +44 (0) 1295 279711

www.performancefriction.com

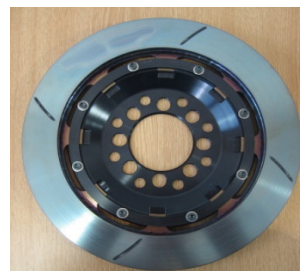
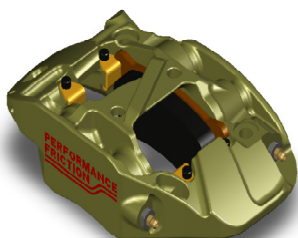
uksales@performancefriction.com

	Description	Side	Part Number	Quantity Per Car	
ZR43 Caliper	Front Caliper	Left	43.284.255.290.11	1	
		Right	43.284.255.290.12	1	
	Rear Caliper	Left	43.284.255.290.03	1	
		Right	43.284.255.290.04	1	
	Brake Pads (For retraction system)			7943.01.18.44	Axle Set
				7943.07.18.44	Axle Set
Brake Pads (Non Retraction)			7835.11.18.44	Axle Set	
			7835.13.18.44	Axle Set	

Discs & Bells	Front V2 Disc	Left	274.19.0033.45	1
		Right	274.19.0033.46	1
	Front V2 Bell & Hardware		172.540.088.13	2
	Rear V2 Disc	Left	262.18.0033.45	1
		Right	262.18.0033.46	1
	Rear V2 Bell & Hardware		161.550.025.13	2

Parts & Brake Fluid	Piston Kit	900.900.103.24	4
	Seal Kit	900.900.100.02	2
	Insulator Kit	900.900.101.02	2
	Piston Cap Kit	900.900.102.13	4
	Piston cap retainer springs 25mm	900.900.107.04	1
	Piston cap retainer springs 29mm	900.900.107.05	1
	Bleed Nipples	900.900.104.01	4
	Bleed Nipple Insert	900.900.104.02	2
	Abutment Kit	900.900.105.04	4
	Mounting Hat Hardware	TBA	4
	Inlet Adapter	900.900.104.07	4
	Brake Fluid (1x 0.5L)	025.0037	-
	Brake Fluid (12x 0.5L)	025.0038	-

Torque Specifications	
Bleed Nipples	6Nm
Bleed Nipple Inserts	20Nm
Inlet Adapter	20Nm
Bell to Disc Bolts	5Nm



Performance Friction Corporation

Carbon Metallic House, Wildmere Road, Banbury, Oxfordshire, OX16 3LU

Tel: +44 (0) 1295 221 020

Fax: +44 (0) 1295 279711

www.performancefriction.com

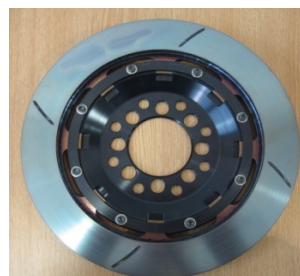
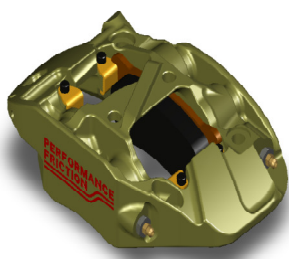
uksales@performancefriction.com

	Description	Side	Part Number	Quantity Per Car	
ZR43 Caliper	Front Caliper	Left	43.284.255.290.11	1	
		Right	43.284.255.290.12	1	
	Rear Caliper	Left	43.284.255.290.03	1	
		Right	43.284.255.290.04	1	
	Brake Pads (For retraction system)			7943.01.18.44	Axle Set
				7943.11.18.44	Axle Set
Brake Pads (Non Retraction)			7835.11.18.44	Axle Set	
			7835.13.18.44	Axle Set	

Discs & Bells	Front V2 / V3 Disc	Left	274.19.0033.45	1	
		Right	274.19.0033.46	1	
	Front V3 Bell & Snap Ring			176.540.088.15	2
	Rear V2 / V3 Disc	Left	262.18.0034.45	1	
		Right	262.18.0034.46	1	
	Rear V3 Bell & Snap Ring			163.550.025.15	2

Parts & Brake Fluid	Piston Kit		900.900.103.24	4
	Seal Kit		900.900.100.02	2
	Insulator Kit		900.900.101.02	2
	Piston Cap Kit		900.900.102.13	4
	Piston cap retainer springs 25mm		900.900.107.04	1
	Piston cap retainer springs 29mm		900.900.107.05	1
	Bleed Nipples		900.900.104.01	4
	Bleed Nipple Insert		900.900.104.02	2
	Abutment Kit		900.900.105.04	4
	Disc Bell Snap Ring Front		TBA	2
	Disc Bell Snap Ring Rear		TBA	2
	Inlet Adapter		900.900.104.07	4
	Brake Fluid (1x 0.5L)		025.0037	-
	Brake Fluid (12x 0.5L)		025.0038	-

Torque Specifications	
Bleed Nipples	6Nm
Bleed Nipple Inserts	20Nm
Inlet Adapter	20Nm
Bell to Disc Bolts	5Nm



Performance Friction Corporation

Carbon Metallic House, Wildmere Road, Banbury, Oxfordshire, OX16 3LU

Tel: +44 (0) 1295 221 020

Fax: +44 (0) 1295 279711

www.performancefriction.com

uksales@performancefriction.com